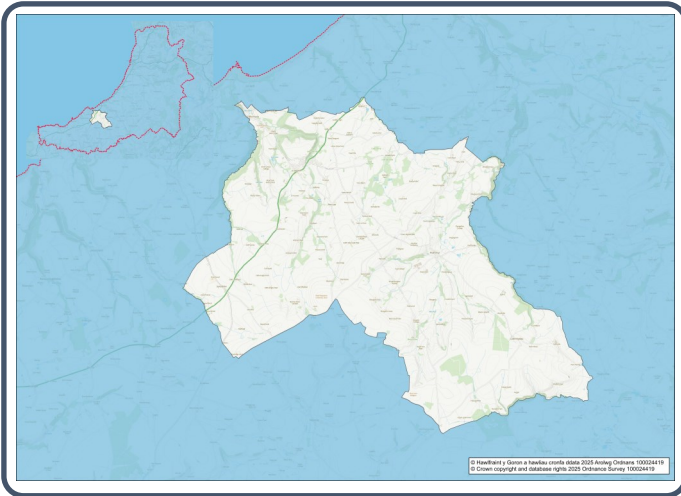


2021 Census Area Profiles – Electoral Wards

W05001309 - Llannarth



Population:



1,573 residents



Females

805



Males

768

Population Change (2011-2021)

-2.7%

43

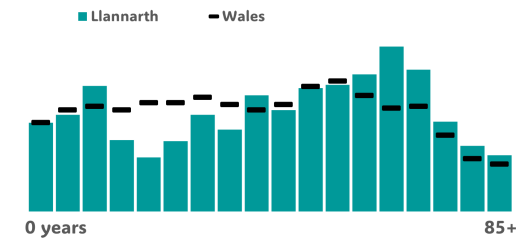
Students

(people over 16 who are engaged in full-time courses of study in secondary, tertiary or higher education institutions)

18.1% aged 0 - 15
53.3% aged 16 - 64
28.6% aged 65+

2.3% BAME
97.5% White
0.2% Other Ethnic Group

Age Profile



Health & Disability:



22.3%

Disabled under the Equality Act



10.7%

Day-to-day activities limited a lot



78.2%

In good or very good health



10.9%

Provides unpaid care

Welsh Language:



48.1%

Can speak Welsh

Age breakdown of Welsh speakers

0-15: 10.4%

16-64: 25.6%

65+: 10.6%



41.6%

Have NO skills in Welsh

Households:



683

Households



2.5%

Households without central heating



55.9%

Households deprived in one or more deprivation dimensions



1.3% Overcrowded Households

Economy:



51.2%

Employment Rate



12.4%

Achieving level 2 qualification



46.8%

Economic Inactivity



20.6%

No Qualifications

Demography, Ethnicity, Identity & Religion:

	Ward		Ceredigion
	No.	%	%
Population			
Population 2021	1,573	-	71,475
Population 2011	1,616	-	75,922
Population change (2011-21)	-43	-2.7%	- 5.8%
Population density	34.2	-	40.0
Sex			
Males	768	48.8%	48.9%
Females	805	51.2%	51.1%
Age			
Aged 0 to 4	77	4.9%	3.8%
Aged 5 to 19	255	16.2%	16.1%
Aged 20 to 34	191	12.2%	18.9%
Aged 35 to 49	260	16.5%	14.2%
Aged 50 to 64	338	21.5%	21.3%
Aged 65 to 74	266	16.9%	13.9%
Aged 75 and over	184	11.7%	11.8%
Country of birth			
Born in UK	1,519	96.5%	92.9%
Born outside of UK	55	3.5%	7.1%
National Identity			
One or more UK identity	1,541	98.0%	93.4%
UK identity and non-UK identity	9	0.6%	1.7%
Non-UK identity	23	1.5%	4.9%
Religion			
Christian	804	51.1%	46.7%
No religion	633	40.2%	43.0%
All Other Religions	30	1.9%	2.6%
Veterans			
Previously served in UK armed forces	61	4.7%	4.1%

Housing & Household Composition:

	Ward		Ceredigion
	No	%	%
Tenure			
Owned	519	75.8%	68.6%
Private rented	114	16.6%	20.6%
Social rented	51	7.4%	10.5%
Shared ownership	1	0.1%	0.3%
Lives rent free	0	0.0%	0.0%
Accommodation Type			
Detached	469	68.7%	50.7%
Semi detached	151	22.1%	23.1%
Terraced	37	5.4%	14.1%
Flat, maisonette or apartment	22	3.2%	11.3%
Caravan or other mobile temporary	4	0.6%	0.8%
Household composition			
One person household	195	28.6%	33.0%
Single family household	453	66.4%	60.4%
Other household types	34	5.0%	6.6%
Central Heating			
No central heating	17	2.5%	2.6%
Occupancy Rating			
Overcrowded households	9	1.3%	1.4%
Number of bedrooms			
1 bedroom	28	4.1%	7.4%
2 bedrooms	135	19.8%	23.6%
3 bedrooms	332	48.6%	42.5%
4+ bedrooms	188	27.5%	26.5%
Number of cars or vans			
No car or van	83	12.2%	15.7%
Deprivation			
Households deprived in one or more deprivation dimensions	382	55.9%	52.9%

Labour Market & Education:

	Ward		Ceredigion
	No	%	%
Economic activity status			
Economically active (in employment)	650	50.5%	46.8%
Economically active (unemployed)	25	1.9%	1.8%
Economically inactive	602	46.8%	47.9%
<i>Retired</i>	402	31.2%	27.7%
<i>Student</i>	34	2.6%	10.0%
<i>Looking after home or family</i>	60	4.7%	3.5%
<i>Long-term sick or disabled</i>	78	6.1%	4.4%
Top 3 Industries			
Public administration, education and health	209	13.3%	14.8%
Distribution, hotels and restaurants	112	7.1%	9.2%
Agriculture, energy and water	103	6.6%	3.8%
Education			
No Qualifications (all aged 16+)	265	20.6%	14.7%
Qualifications Level 2	160	12.4%	13.7%
Apprenticeship	85	6.6%	5.4%
Travel to Work			
Work mainly at/from home	243	36.9%	31.6%
Driving car/van	358	54.4%	51.1%
Bus	8	1.2%	1.3%
On foot	13	2.0%	10.0%